



**View of Spring Wood and Low Healey Cote Farm**

There is a wood called Spring Wood just above our school. It is a common name for woodland. This is because in the past many of the trees were coppiced and the new shoots were called "Springs".



**A very old Oak tree near Healey**

There are many ancient trees around Healey, most of them are Oak trees. The wood from the Oak was used for building and making boats but in this area it was mainly used to make charcoal.

Other trees found in the hedgerow include, Ash, Alder, Sycamore, Holly and Hazel. They were all useful in some way. Holly leaves were even collected to feed livestock through the winter. Hazel is very good wood for weaving as it has very flexible branches. People often used it for making baskets, fences and wattle and daub walls.

## SHINE

Studying Heritage in Nidderdale Environs

The SHINE project aims to make pupils at Primary schools in and around Nidderdale aware of local archaeology and to encourage the development of lasting interest in their heritage. This is being achieved by visits to the schools by Kevin Cale, Community Archaeologist with assistance from local Community Archaeology groups. The project is being funded by the Local Heritage Initiative.

The project meets school curriculum requirements:

*Studies at KS2 should focus on Roman, Anglo-Saxon, Viking, Victorian or post-1930's sites.*

*Studies at KS3 should focus on Norman, Medieval, 1500 - 1750, 1759 - 1900 sites.*

Acknowledgements:

Some of the text and all the illustrations were provided by the Junior Class of Kell Bank C.E. Primary School during the summer 2005.

The preparation of this leaflet has been sponsored by the Agill Research Project. The aerial photograph has been reproduced with the kind permission of the Heritage Unit, North Yorkshire County Council. Other photos have been reproduced with owners' permission.

Thanks to those who gave their time freely and provided information.



**Local Heritage initiative**



© Kell Bank C.E. Primary School 2005



**KELL BANK C.E. PRIMARY SCHOOL  
HEALEY, MASHAM, RIPON  
NORTH YORKSHIRE, HG4 4LH**

## SHINE

### Heritage Walk

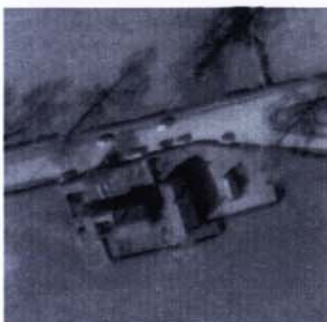


**A journey through the fields of Healey with the children of Kell Bank Primary School discovering along the way clues to our near and distant past.**



Extract of an 1896 Ordnance Survey Map

Old maps help us understand how the landscape around us has changed over the years. From this you can see there was a Stone Pinfold in Healey which was made for putting lost sheep in until the owner came for them. There was a Pound next to the Pinfold for dogs.



A bird's eye view of Kell Bank School  
An aerial photo taken in 1972

Kell Bank School was built in 1820 with money from the Danby Family who also built Masham Grammar School. It was made from local sandstone. There is a Bench Mark just by the main entrance. We saw this on several old maps. When the school was opened most of the local children came here though there were four other schools in the valley.



Snowballing in the school playground in 1967

Witnesses told us that until the 1960s the playground was earth and slabs and the head teacher's garage was in a corner. There was a hollow tree stump in the middle which was used as a sand pit.



Healey Village c.1965

The original settlement was down at the bottom side of the road. Earthworks of this medieval village are still recognisable in the fields. In Victorian times Swinton Estate had new cottages built above the road. The old Lord Swinton had all the doors and windows painted the same colour. There are some new houses in Healey built within the last twenty years.



The fields near the school

Old boundaries can be seen in many local fields and some probably date from the time of the Enclosure Awards. Before this the animals roamed around and the farmers had to tend them all the time to stop them straying. Some boundaries were reinforced with trees or hedges planted on top.



Bombs Away

In this area there are few living witnesses from World War 2. There were evacuees who came from Gateshead and other towns but they did not stay very long. Two planes crashed near Ellingstring and a German bomb was dropped in a field next to the school, fortunately no one was hurt.