



Bridlington HARBOUR HERITAGE MUSEUM



Welcome to another world - Bridlington's Harbour Heritage Museum. Now run by an enthusiastic band of local volunteers who are passionate about preserving and enhancing Bridlington maritime history.

This museum is run on behalf of Bridlington Sailing Coble Preservation Society, to raise the constant funds necessary to keep afloat our historic sailing coble - 'The Three Brothers' - a style of fishing boat totally unique to this part of the British coast.

The Museum has...



On your journey back in time you'll discover a Bridlington far removed from parts of Bridlington you know so well today. A rich collection of artifacts, photographs and memorabilia which represents hundreds of years of Bridlington's maritime past.



The Three Brothers Historic Sailing Coble

The volunteers who run this attraction have strived to bring together a fascinating representation of a different era. Listen to tales of heroism by local fishermen during the famous 'Great Gale' of 1871 when scores of men perished just offshore when the wind suddenly changed direction.

..fascinating items & photos



School parties are welcomed and can also be given a guided tour of the harbour itself. Children are also encouraged to join the short reenactment about a fisherman and his wife, just before he joins the lifeboat crew.

Membership of the Bridlington Sailing Coble Preservation Society is available for £5.00 annually. You are welcome to join and keep this treasured craft afloat.

To book or for further information, contact:

- Lynne Fry on 01262 608346
- Mike Wilson on 01262 609228

BSCPS reg. Charity No. 1095946



'The Aquarium' Gallery..

Converted from a seawater aquarium which had outlived its useful life, The Gallery now houses a large selection of local artists' work of differing media & subjects...

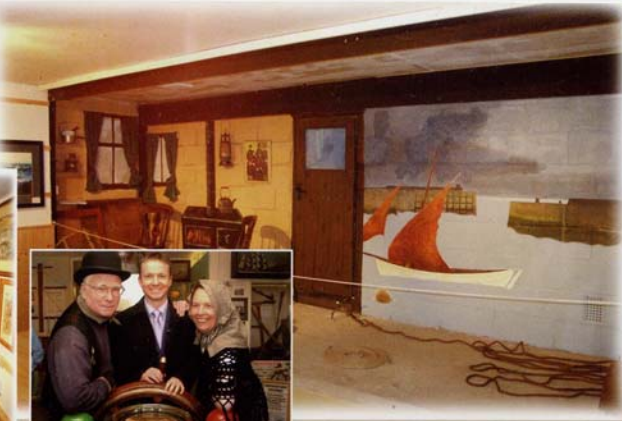


photo courtesy of Simon Kench

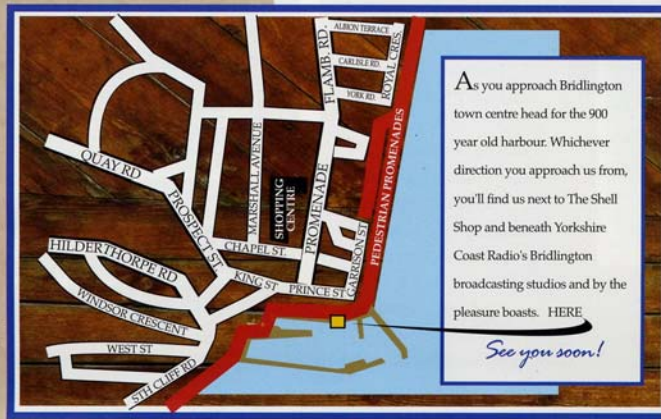
Also from time to time Mike & Diane Wilson, Free Spirit Writers, reenact local historical dramas featuring fishing tales & heroes from Bridlington's rich maritime heritage and past. These are not to be missed!

...and Theatre

Where to find



Bridlington
HARBOUR HERITAGE MUSEUM



As you approach Bridlington town centre head for the 900 year old harbour. Whichever direction you approach us from, you'll find us next to The Shell Shop and beneath Yorkshire Coast Radio's Bridlington broadcasting studios and by the pleasure boats. HERE

See you soon!

..& when are we open?

The museum is open from May to September each year between 10am and 4pm daily.

Please note however that this venture is entirely run by volunteers and therefore it may be closed at times, if there is a problem with staff cover.

Admission:

Adults: 50p
Child/Conc 25p

School parties:
Up to 25 children
& 3 adults £15.00

Designed & printed by Burlington Design, Bridlington 01262 609300



Bridlington
HARBOUR HERITAGE MUSEUM